

PART OF S.W. 1/4 OF SEC. 17 & PART OF N.W. 1/4 OF SEC. 20, T. 7N., R. 1W., S.L.B. & M. III

MAJESTIC HEIGHTS SUBDIVISION NO. 10

LOTS 190-194, 201-203

IN PLEASANT VIEW CITY

SCALE 1" = 50'

TAXING UNIT: II

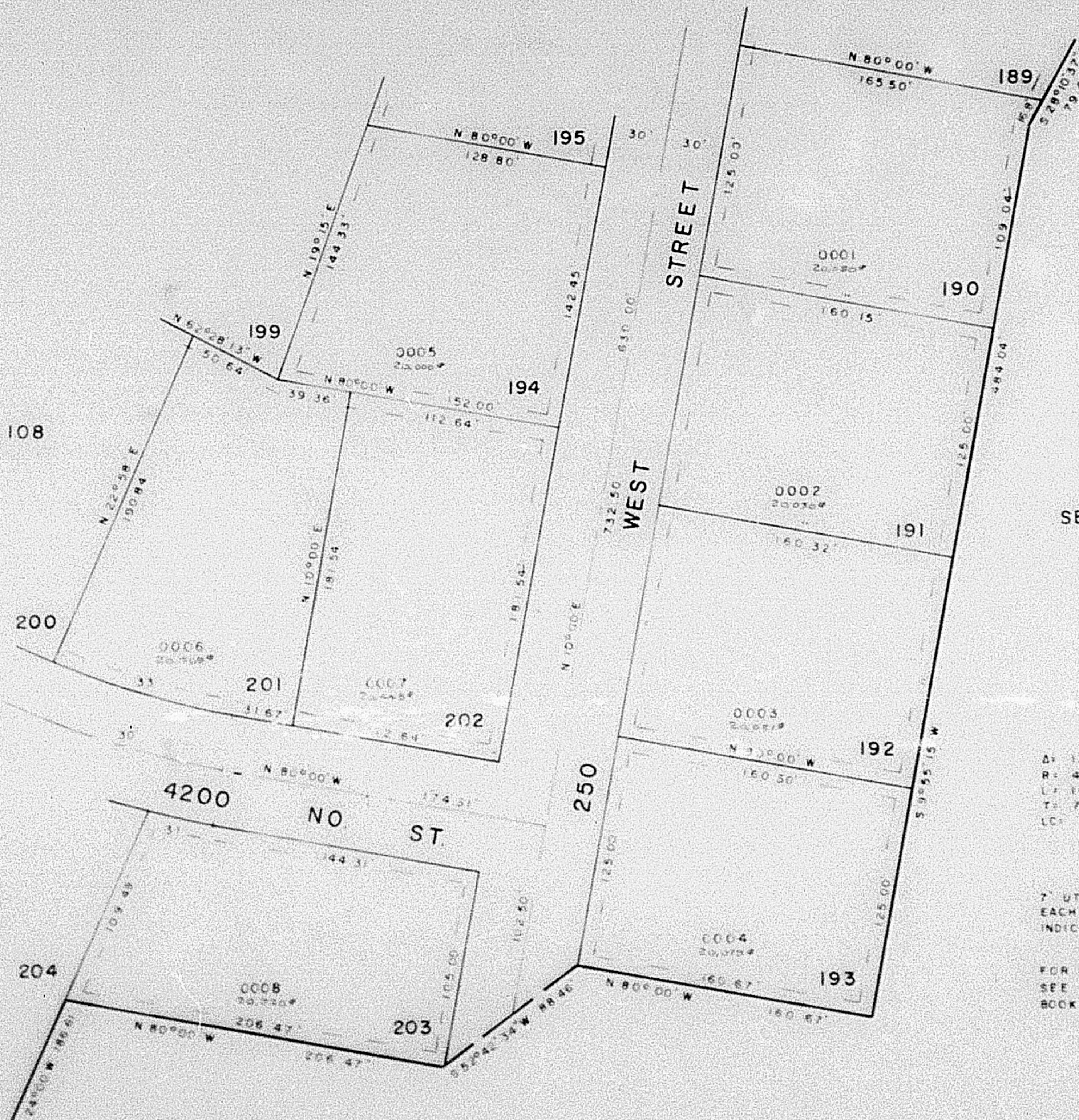
PREFIX: 16-III

SEE PAGE 110

EXCEPT WHERE OTHERWISE SHOWN
ALL LOTS OWNED BY:
JAY WADMAN
1st JUNE C.

SEE PAGE 108

SEE PAGE 37-4



CURVE DATA

	30	31	33
Δ	179°31'47"	3°57'38"	129°30'
R	486.44	516.44	456.44
L	148.83	35.70	99.58
T	75.00		
LC		35.69	99.38
		S 78°01'11"E	N 73°45'W

7' UTILITY & DRAINAGE EASEMENT
EACH SIDE OF PROPERTY LINE AS
INDICATED BY DASHED LINES

FOR COMPLETE ENG. DATA
SEE ORIG. DED. PLAT IN
BOOK 23, PAGE 31

SEE PAGE 37-4